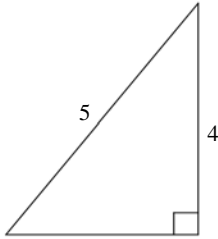
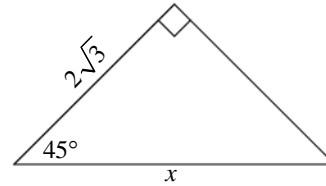


UB SAT 2009  
Worksheet #20b  
Special Triangles

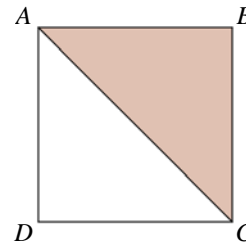


1. If the area of the triangle above is 6, what is its perimeter?
- (A) 8  
(B) 11  
(C) 12  
(D) 15  
(E) 16

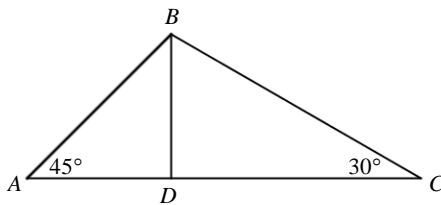
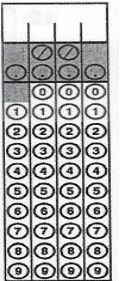


4. In the figure above, what is the measure of  $x$ ?
- (A)  $2\sqrt{3}$   
(B)  $2\sqrt{6}$   
(C) 6  
(D)  $6\sqrt{2}$   
(E) 8

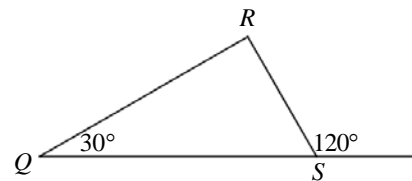
2. A movie theater is 3 blocks due north of a supermarket, and a beauty parlor is 4 blocks due east of the movie theater. How many blocks long is the street that runs directly from the supermarket to the beauty parlor?
- (A) 2.5  
(B) 3  
(C) 4  
(D) 5  
(E) 7



5. In square ABCD shown above, if  $AC=5$ , what is the area of the shaded region?



3. In the figure above, if  $AB = 2$  and  $AC$  is perpendicular to  $BD$ , what is the length of  $BC$ ?
- (A)  $\sqrt{2}$   
(B) 2  
(C)  $2\sqrt{2}$   
(D) 3  
(E)  $\sqrt{6}$



6. In  $\triangle QRS$  shown above, if  $QS = 6$ , then  $RS =$
- (A) 12  
(B)  $6\sqrt{3}$   
(C) 6  
(D)  $3\sqrt{3}$   
(E) 3

UB SAT 2009  
Worksheet #20b  
Special Triangles  
Answers

1. C

2. D

3. C

4. B

5.  $\frac{25}{2}$

6. E